

**Giantin Polyclonal Antibody**  
**Purified Rabbit Polyclonal Antibody (Pab)**  
**Catalog # AP55144**

**Specification**

**Giantin Polyclonal Antibody - Product Information**

Application	IHC-P, IHC-F, IF, ICC, E
Primary Accession	<a href="#">Q14789</a>
Reactivity	Rat, Dog
Host	Rabbit
Clonality	Polyclonal
Calculated MW	376 KDa
Physical State	Liquid
Immunogen	KLH conjugated synthetic peptide derived from human Giantin
Epitope Specificity	751-850/3259
Isotype	IgG
<b>Purity</b>	
affinity purified by Protein A	
Buffer	0.01M TBS (pH7.4) with 1% BSA, 0.02% Proclin300 and 50% Glycerol.
SUBCELLULAR LOCATION	Golgi apparatus membrane.
SUBUNIT	Homodimer; disulfide-linked. Interacts with PLK3.
Important Note	This product as supplied is intended for research use only, not for use in human, therapeutic or diagnostic applications.

**Background Descriptions**

The Golgi apparatus, which participates in glycosylation and transport of proteins and lipids in the secretory pathway, consists of a series of stacked cisternae (flattened membrane sacs). Interactions between the Golgi and microtubules are thought to be important for the reorganization of the Golgi after it fragments during mitosis. This gene encodes one of the golgins, a family of proteins localized to the Golgi. This encoded protein has been postulated to play roles in the stacking of Golgi cisternae and in vesicular transport. Several alternatively spliced transcript variants of this gene have been described, but the full-length nature of these variants has not been determined. [provided by RefSeq, Feb 2010]

**Giantin Polyclonal Antibody - Additional Information**

**Gene ID** 2804

**Other Names**

Golgin subfamily B member 1, 372 kDa Golgi complex-associated protein, GCP372, Giantin, MacroGolgin, GOLGB1

**Dilution**

<span class = "dilution\_IHC-P">IHC-P~~N/A</span><br \><span class = "dilution\_IHC-F">IHC-F~~N/A</span><br \><span class

=<span class = "dilution\_IF">IF~~1:50~200</span><br \><span class = "dilution\_ICC">ICC~~N/A</span><br \><span class = "dilution\_E">E~~N/A</span>

**Format**

0.01M TBS(pH7.4), 0.09% (W/V) sodium azide and 50% Glyce

**Storage**

Store at -20 °C for one year. Avoid repeated freeze/thaw cycles. When reconstituted in sterile pH 7.4 0.01M PBS or diluent of antibody the antibody is stable for at least two weeks at 2-4 °C.

**Giantin Polyclonal Antibody - Protein Information**

**Name** GOLGB1

**Function**

May participate in forming intercisternal cross-bridges of the Golgi complex.

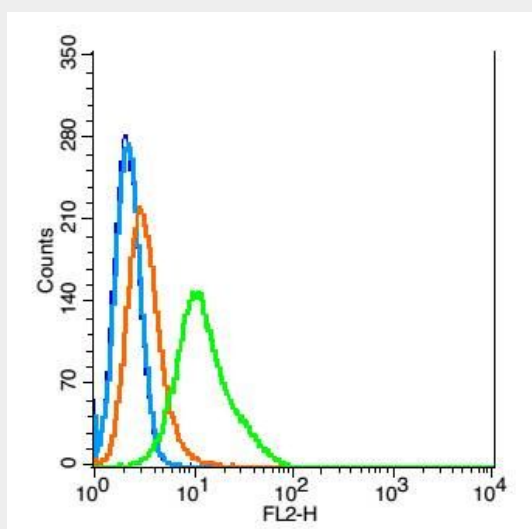
**Cellular Location**

Golgi apparatus membrane; Single-pass type I membrane protein

**Giantin Polyclonal Antibody - Protocols**

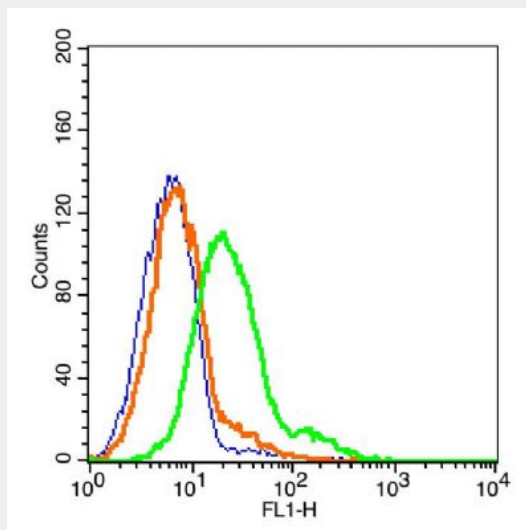
Provided below are standard protocols that you may find useful for product applications.

- [Western Blot](#)
- [Blocking Peptides](#)
- [Dot Blot](#)
- [Immunohistochemistry](#)
- [Immunofluorescence](#)
- [Immunoprecipitation](#)
- [Flow Cytometry](#)
- [Cell Culture](#)

**Giantin Polyclonal Antibody - Images**

Blank control: Hela(blue), the cells were fixed with 2% paraformaldehyde (10 min) and then permeabilized with ice-cold 90% methanol for 30 min on ice.

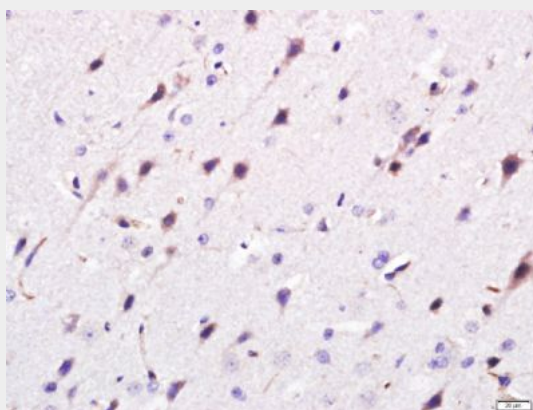
Isotype Control Antibody: Rabbit IgG(orange) ; Secondary Antibody: Goat anti-rabbit IgG-PE(white blue), Dilution: 1:200 in 1 X PBS containing 0.5% BSA ; Primary Antibody Dilution: 1  $\mu$ g in 100  $\mu$ L 1X PBS containing 0.5% BSA(green).



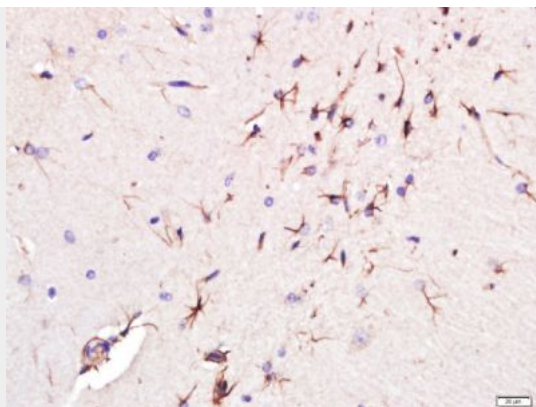
Blank control: Lovo Cells(blue).

Primary Antibody: Rabbit Anti-Giantin/AF488 Conjugated antibody (bs-13356R-AF488), Dilution: 5  $\mu$ g in 100  $\mu$ L 1X PBS containing 0.5% BSA;

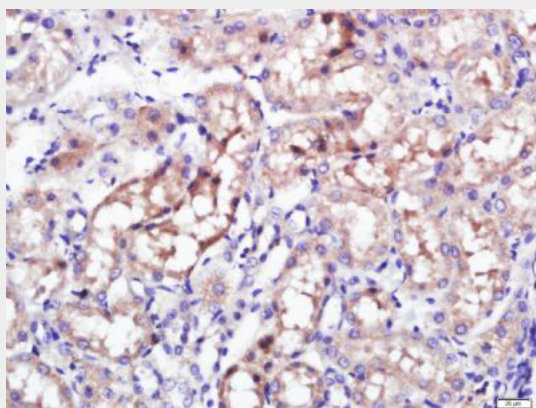
Isotype Control Antibody: Rabbit IgG/AF488(orange) ,used under the same conditions.



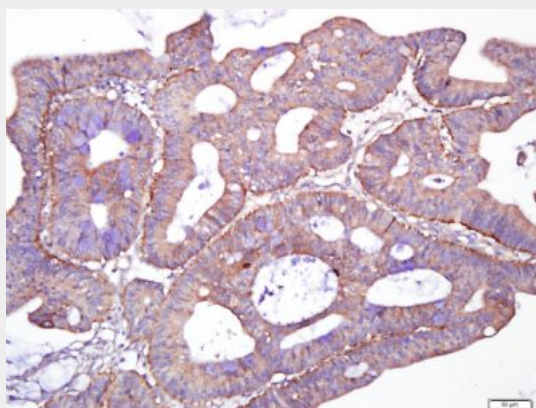
Paraformaldehyde-fixed, paraffin embedded (rat brain); Antigen retrieval by boiling in sodium citrate buffer (pH6.0) for 15min; Block endogenous peroxidase by 3% hydrogen peroxide for 20 minutes; Blocking buffer (normal goat serum) at 37°C for 30min; Antibody incubation with (Giantin) Polyclonal Antibody, Unconjugated (bs-13356R) at 1:400 overnight at 4°C, followed by a conjugated secondary (sp-0023) for 20 minutes and DAB staining.



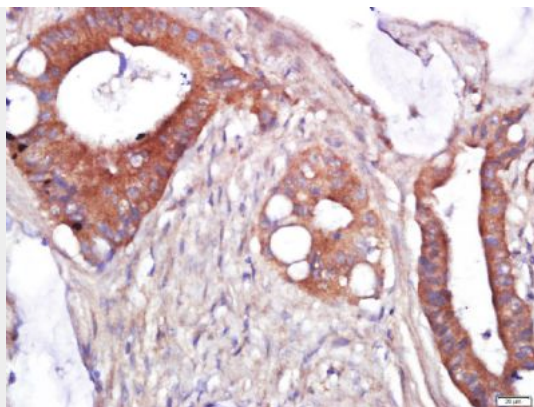
Paraformaldehyde-fixed, paraffin embedded (rat brain); Antigen retrieval by boiling in sodium citrate buffer (pH6.0) for 15min; Block endogenous peroxidase by 3% hydrogen peroxide for 20 minutes; Blocking buffer (normal goat serum) at 37°C for 30min; Antibody incubation with (Giantin) Polyclonal Antibody, Unconjugated (bs-13356R) at 1:400 overnight at 4°C, followed by a conjugated secondary (sp-0023) for 20 minutes and DAB staining.



Paraformaldehyde-fixed, paraffin embedded (rat kidney); Antigen retrieval by boiling in sodium citrate buffer (pH6.0) for 15min; Block endogenous peroxidase by 3% hydrogen peroxide for 20 minutes; Blocking buffer (normal goat serum) at 37°C for 30min; Antibody incubation with (Giantin) Polyclonal Antibody, Unconjugated (bs-13356R) at 1:400 overnight at 4°C, followed by a conjugated secondary (sp-0023) for 20 minutes and DAB staining.



Paraformaldehyde-fixed, paraffin embedded (human cervix cancer); Antigen retrieval by boiling in sodium citrate buffer (pH6.0) for 15min; Block endogenous peroxidase by 3% hydrogen peroxide for 20 minutes; Blocking buffer (normal goat serum) at 37°C for 30min; Antibody incubation with (Giantin) Polyclonal Antibody, Unconjugated (bs-13356R) at 1:400 overnight at 4°C, followed by a conjugated secondary (sp-0023) for 20 minutes and DAB staining.



Paraformaldehyde-fixed, paraffin embedded (human cervix cancer); Antigen retrieval by boiling in sodium citrate buffer (pH6.0) for 15min; Block endogenous peroxidase by 3% hydrogen peroxide for 20 minutes; Blocking buffer (normal goat serum) at 37°C for 30min; Antibody incubation with (Giantin) Polyclonal Antibody, Unconjugated (bs-13356R) at 1:400 overnight at 4°C, followed by a conjugated secondary (sp-0023) for 20 minutes and DAB staining.